

USB Smart Card Reader User Manual

Attention:

※ When you installing driver or before, Do not plug-in Smart card reader.

Thank you for using our product. Please follow instruction to install driver for smart card reader. The driver CD is included in Smart card reader box. Please use the attached CD ROM to install driver. **DO NOT** download or upgrade unknown driver.

If you have any question, please contact our customer service specialist.

In order to protect your smart card, please remove smart card and keep in the safe place after finish using Smart Card Reader.

V1.40 supports Win 2000 sp4/XP sp2/VISTA 32-bit operating system

Driver Installation

1.1 Put CD into CD-ROM; click "My computer" or "Windows Explorer", then find a file named "setup" from the CD, and double clicks on it, therefore, start to install the driver. (See Fig. 1)

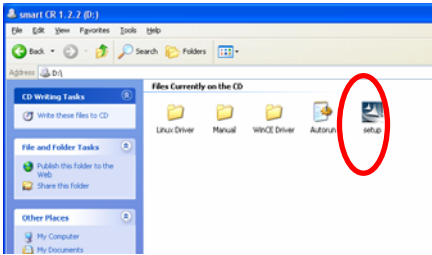


Fig. 1

1.2 At first, the computer shows a screen “Preparing to install” for welcome and driver be installed (see Fig. 2)

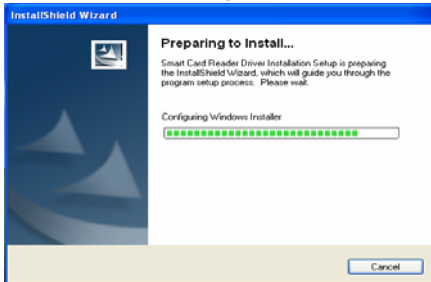


Fig. 2

1.3 Then the screen shows “If the reader is plugin now, please replug it. Plug USB cable of Smart card Reader into USB port of computer/notebook (see Fig. 4) ,and Click “OK” (See Fig. 3)

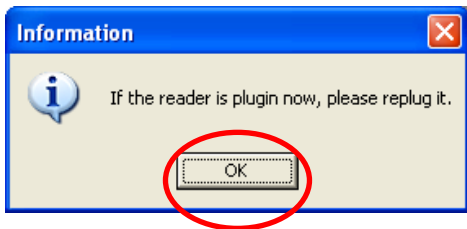


Fig. 3



Fig. 4

1.4 The screen shows driver installation is completed. Click "Finish" (see Fig. 5)

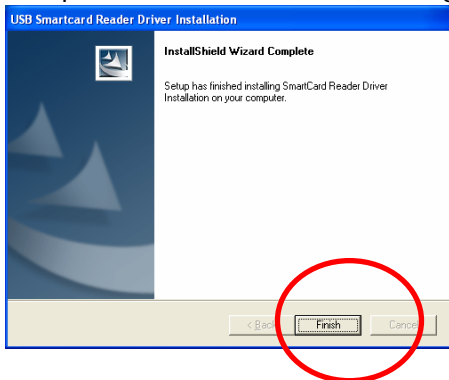


Fig.5

1.5 LED lights direction

Slim type



Other types

